



NORTH SEA ENABLER

Multipurpose ROV and Light Construction Vessel

Type:	Vard PSV 06 ROV
Yard:	Vard Brevik
Year Built:	2010
Owner:	North Sea Enabler AS



NORTH SEA ENABLER



MPSV and Light Construction/IMR Vessel

MAIN CHARACTERISTICS

Length, Overall:	96.3 m
Beam:	20 m
Depth:	8 m
Max Draft:	6.6 m
Light Draft:	3.5 m
Minimum Height:	31 m
Freeboard:	1.3 m
Displacement:	8,400 mt
Deadweight:	4,100 mt
Clear Deck Space:	59.8 x 16.8 m
Clear Deck Area:	990 m ²
Deck Strength:	10 t/m ²

TECHNICAL SPECIFICATION

Details are believed to be correct but not guaranteed.
Last revision date: March. 23, 2025

Capacities

Deck Cargo:	1900 t
Fuel Oil:	1130 m ³
Potable Water:	580 m ³
Fresh Water:	1232 m ³
Drill / Ballast Water:	2400 m ³
Bulk Tanks (6) Total:	400 m ³
Liquid Mud (23lbs/gal):	830 m ³
Base Oil:	350 m ³
Brine:	830 m ³
Reverse Osmosis Unit:	2 x 25 t

Machinery

Diesel Electric Vessel	
Propulsive / Total HP:	8,600KW / 11,700HP
Propellers (2):	2,200 kW Azimuthing
Z-Drives:	Yes
Primary Generators (4):	2,100 kW 690 V 60 Hz
Driven by:	Main Engines
Emergency Generators (1):	200 kW 690 V 60 Hz
Driven by:	Cat C9; Marine Diesel Bow
Bow Thruster (3):	2 x Tunnel, 1 x Retractable
Driven by:	2 x 1609 HP, 1 x 1180 Hp Electric
Motors	
Total Thrust Max:	55.1 st or 50 mt

Performance (Approx. values assuming Ideal Conditions)

Fuel Consumption VS Speed	
Maximum:	25 m ³ /day @ 14 knots
Cruising:	16 m ³ /day @ 12 knots
Economical:	13 m ³ /day @ 10 knots
Standby:	5.5 m ³ /day @ 0 knots
Range @ 12 knots:	8,100 nm

Transfer Rates

Fuel Oil:	250 m ³ /h @ 85 m
Potable Water:	150 m ³ /h @ 85 m
Fresh Water:	150 m ³ /h @ 85 m
Drill/Ballast Water:	150 m ³ /h @ 85 m
Bulk:	66 m ³ /h @ 85 m
Brine:	100 m ³ /h @ 85 m
Base Oil:	100 m ³ /h @ 85 m
Liquid Mud:	100 m ³ /h @ 85 m

Registration

Flag:	NIS
Call Sign:	LAYT8
IMO Number:	9440203
Builder:	STX Norway Offshore AS Brevik
Year Built:	2010
Tonnage(ITC):	4769 GT 1513 NT
Class: DNV: 1A1 Fire fighter (I) Clean (Design)	
COMF(V-3) DK(+) DYNPOS(AUTR) E0 HELDK	
HL(2.5) NAUT(OSV(A)) SF	

Deck Equipment

Anchor (2):	8929 lbs STOCKLESS BOWER
Anchor Chain:	522.5 m of 50 mm (total)
AHC Crane:	100 t @ 15 m
Aux. Crane 1:	2 t @ 10.1 m
Aux. Crane 2:	3 t @ 10.1 m
Capstans (2):	10 t Brattaag (20m/min)
Tugger (2):	10 t Brattaag (20m/min)

Accommodations

Number of Berths:	82
1-man cabins:	12
2-man cabins:	15
4-man cabins:	10
Certified to Carry:	82
Hospital:	Yes

Electronics

Radar(s):	2
Depth Sounder:	1
Gyro Compass:	3
Doppler Log:	1
Radio:	3 x VHF; 2 x Aeronautical VHF
Satelite Comms:	2

Special Equipment

Fire Fighting:	FiFi-1 Capable
Dynamic Positioning:	DP-2 K-POS
DP Ref. Systems:	2 x DGPS Kongsberg, DPS 232, DPS 132
Radar based:	Kongsberg Radius 1000
Laserbased:	Fan Beam HiPAP 501
Moonpool:	6.5 m x 6.5 m
Mud Recirculation:	Yes
Mud Mixers:	Yes
Rescue Boat:	6 MAN FRC SOLAS APPROVED

Decks and Arrangements

Fresh Water Making Capacity

- 2 x 15 m³/day reverse osmosis water makers

Stores Crane

- 1 x 3.0 Tonne @ 10meters
- 1 x 2.0 Tonne @ 10meters

Deck Machinery and Mooring

- Tugger winches 2 x Aker Brattvåg Winch 10.0t
- Windlasses 2 x Aker Brattvåg Winch 50K3, forward 18.4t
- Mooring winches 2 x Aker Brattvåg Winch, aft 10.0t
- Anchor and chain 2 x 4050kg, 522,5m. 50mm-K3

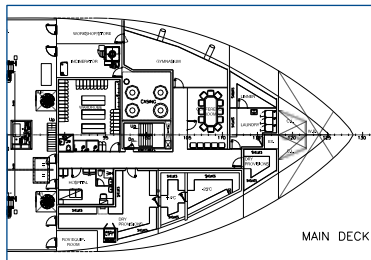
External Firefighting

- ABS FIFI-1 Classification
- Water capacity of 2,400 m³/h
- Fire water supplied by two electrically driven pumps
- Fire water delivered by 2 x FFS 1200 remote controlled monitors mounted above wheelhouse

Accommodation

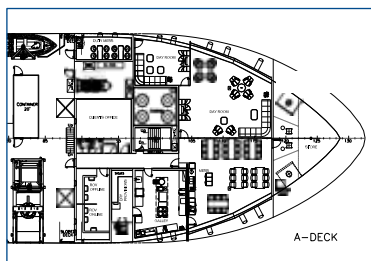
Vessel is equipped for and certified to carry 82 personnel. There are (11) 1 man staterooms/cabins, (15) 2 man cabins, (10) 4 man cabins, Mess Seating (36), Duty Mess Seating (8), 2 x day rooms, conference room, 2 x customer offices, ROV room, large change room, gym, hospital.

Main Deck



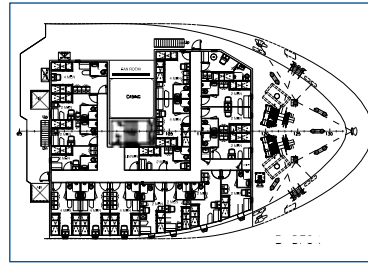
Hospital
Conference Room
Change Room
Provisions Storage
Gymnasium
Laundry

A Deck



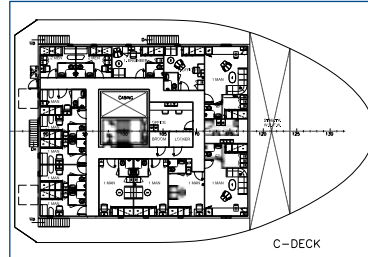
2 x Day Rooms
ROV Room
Client Office 36
Seat Mess
8 Seat Duty Mess
Galley

B Deck



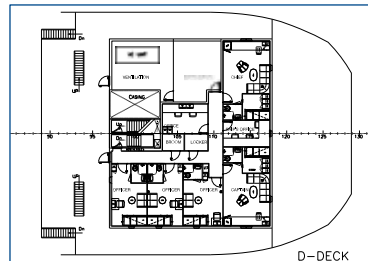
12 x 2 man cabins
6 x 4 man cabins
48 Total Berths on "B" Deck

C Deck



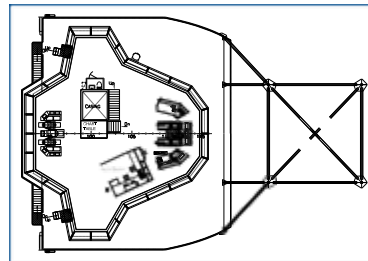
Ship's Office
Second Office
4 x 2 man; 4 x 4 man cabins
6 x 1 man cabins
Stability Tank
16 Total Berths on "C" Deck

D Deck



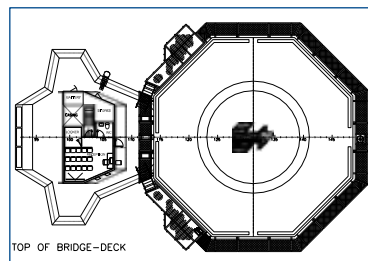
Captain's Stateroom
Chief Engineer's Stateroom
3 x Officers' Staterooms
Ship's Office
Engineering Office
5 Total Berths on "D" Deck

Bridge-Deck



Dual Redundant Control
Separate Radio Station
Chart Table / Writing Desk
Head
Coffee Station

Top of Bridge - Deck



21 M Helideck,
Sikorski S 92 rated
15 seat waiting / receiving area
Reception desk
Head
Luggage locker

Subsea Operations

Vessel is equipped with 100 MT AHC subsea crane, moonpool, reserved ROV deck space and removable starboard bulwarks

Subsea Crane

- MacGREGOR Hydramarine Crane Model HMC 3568 LKO 250-32 (1000-15) AHCT
- Strengthened for DAF of 1.4
- 360 degree unlimited rotation
- Max Combined Trim/List 5° +/- 2 degrees

Main Wire

- Active Heave Compensated
- 2,000 m Subsea Hook Travel
- 100 MT Single Line SWL at 15 m
- 75 MT SWL at 20m
- 25 MT SWL at 32m
- Auto-tension Lift Mode

Whip Wire

- 500 m Hook Travel
- 10 MT Single Line SWL at 33 m
- 2 MT Man Rated SWL at 33 m

Removable Bulwarks (see Aft Starboard Profile drawing)

- Starboard, fore and aft of subsea crane
- Length: 15.4 m forward and 11.9 m aft

ROV (Capacity Available - Optional)

- Reserved A-deck space for work class ROV
- Second observation ROV can be added, or second work class system with mezzanine deck extension.
- Power Supply: 3 x 440 V, 500 kVa 800 A Breakers

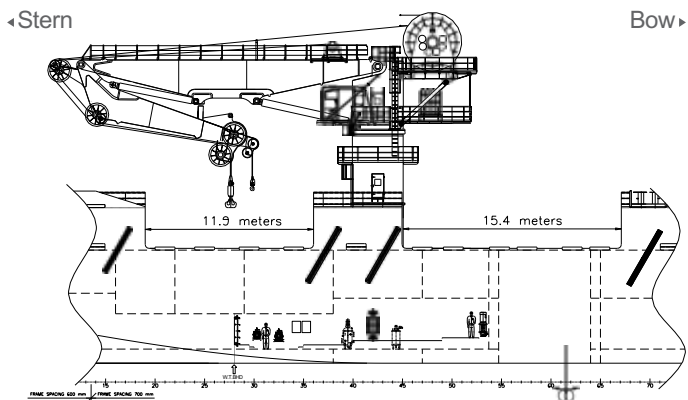
Moonpool

6.5 x 6.5 meters, bottom and top hatch

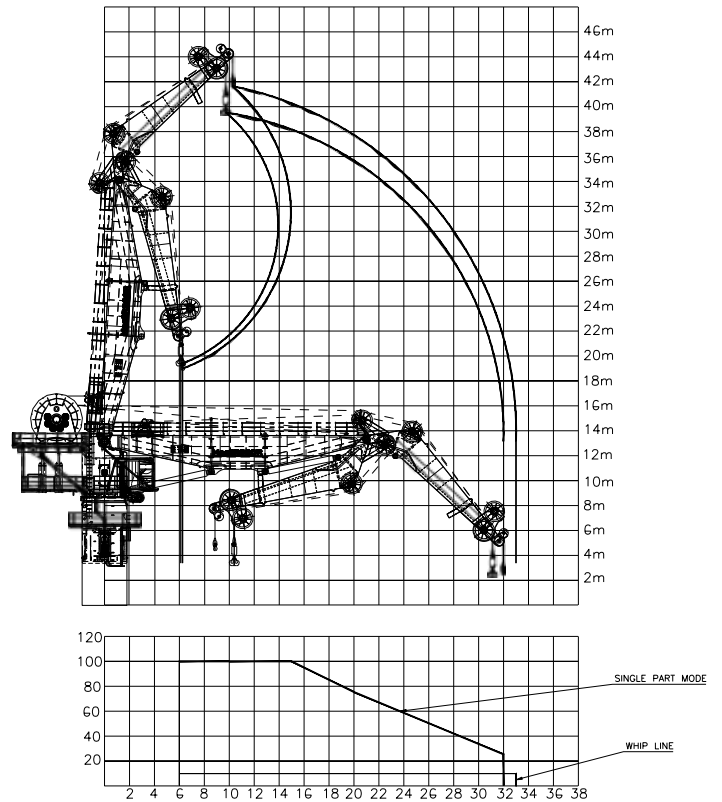
Fast anti heel system

Frank Moen Type RBP 300-3

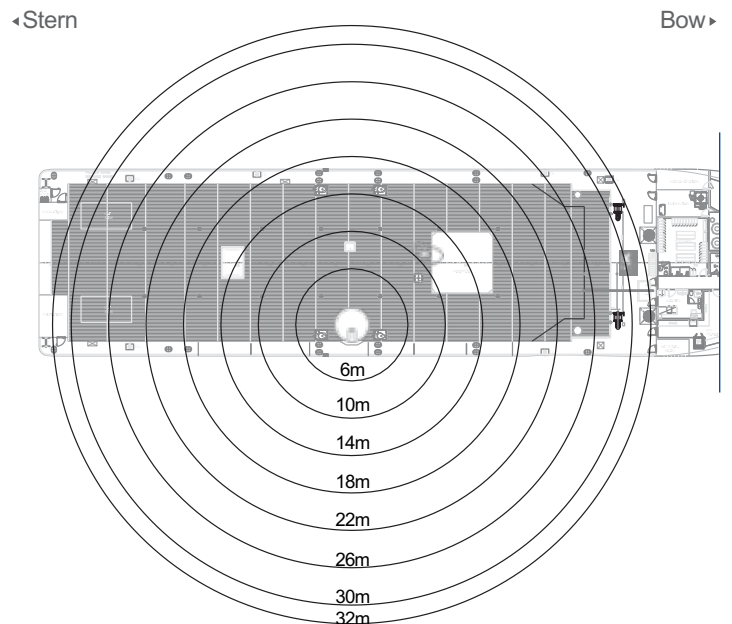
Aft Starboard Profile



Subsea Crane Hook Height; Radius, and Working Load Chart



Subsea Crane Radius



Station Keeping

Vessel is classed DYNPOS(AUTR)

Dynamic Positioning System

- Kongsberg Maritime DP II syst. K-Pos DP-21

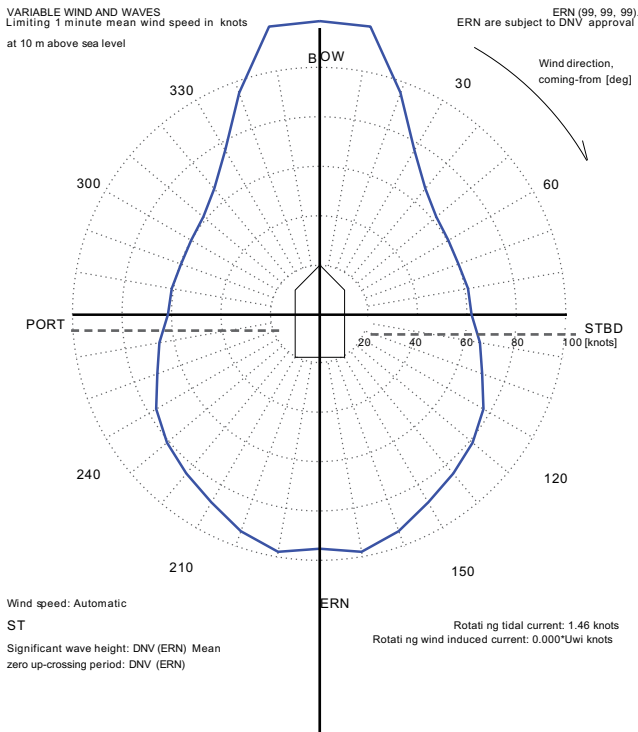
Position Ref. Systems

- DGPS
- Radius
- Fan Beam
- Gyros
- MRUs
- HPR
- LW Tautwire
- Wind Sensors

Model

Kongsberg DPS 700
 Kongsberg RADIUS 1000
 Kongsberg Fanbeam™ 4.2
 Anschütz
 Seatex MRU 5
 Kongsberg HiPAP™ 500
 Lightweight Taut Wire MK15B
 Gil Windobserver™ II Ultrasonic
 Anemometer

DP Capability Plot



# Thruster	X [m]	Y [m]	F+ [tf]	F- [tf]	Max [%]	Pe [kW]
1 TUNNEL	36.9	0.0	18.0	-18.0	100	1200
2 TUNNEL	33.5	0.0	18.0	-18.0	100	1200
3 AZIMUTH	27.6	0.0	16.0	0.0	100	883
4 AZIMUTH	-41.2	5.0	29.4	0.0	100	2200
5 AZIMUTH	-41.2	5.0	29.4	0.0	100	2200

Propulsion, Navigation and Communication

Vessel propulsion is diesel electric with ZDrives and three bow thrusters

Propulsion Systems

All propulsion is electric motor driven kW

• Main Engines	(4) Cat 3516C, Marine Diesel	8,752
• Propellers	(2) Rolls Royce Azimuthing ZDrives	4,400
• Bow Thruster	(2) Rolls Royce Tunnel Thruster	2,400
• Bow Thruster	(1) Rolls Royce Drop-Down Thruster	883
• Primary Gens	(4) 690 volts 60 hertz	8,400
• Emergency Gen	(1) 690 volts 60 hertz	232

Speed vs Fuel Consumption

(Assuming Fair Weather)		t/day	m ³ /day
• Maximum	about 14 knots	14.7	17.3
• Cruising	about 12 knots	12.75	15.0
• Economical	about 10 knots	10.8	12.7
• Standby (Generator Only)		4.7	5.5

Range at 12 knots is about 9,000 nautical miles

Instruments and Electronics

One 10cm S-Band & one 3cm X-Band ARPA radar, Magnetic Compass, 3 x Gyro Compass, Echo sounder log, AIS, VDR & HPR Radio, INMC Satellite com., VHF, UHF, SEVSAT™ Ku Band VSAT